

**Ruminations in the cloisters:** talking about photography

**Materiality** [Modalities employed in contemporary practice]



**Wayne Barrar:** *Falling water at Waihopai River dam structure, Marlborough* 2012  
**Albumen print** Gold toned



**Joyce Campbell:** *Peyote*, 2007  
**Ambrotype**



**Ben Cauchi:** *Mixing Solutions*, 2003  
**Ambrotype**



**Ben Cauchi:** *Humidity* 2010  
**Wet collodion on Acrylic**



**Ben Cauchi:** *Curtain (close)*, 2011  
**Wet collodion on Acrylic**



**Derek Henderson:** *Palmerston Street, Westport, West Coast, 6-05pm, 2nd February, 2004*  
**C-type print**



**Mark Adams & Areta Wilkinson:** *7.11.11 Huia O'kains Bay Maori & Colonial Museum Huia Tail Feathers*, 2011  
**Photogram Cyanotype**

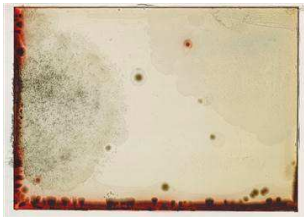
**Wayne Barrar:** *Perlan geothermal hot water tanks, Reykjavik, Iceland 2001*  
**Contact print Cyanotype**



**Joyce Campbell:** *Sometimes she shows herself as a River*, 2010 [from: *Te Taniwha*]

**Daguerreotype** - The plates are developed using the Becquerel process, a variant Daguerreotype technique that replaces development by mercury vapour with exposure to amber light.

**Gelatin silver prints** [Gold &/or Selenium-toned]  
Laurence Aberhart - *selected Taranaki photographs*  
Peter Peryer - *selected works*



**Joyce Campbell:** *Wild strain fungi*, 1999

**Photogram** Ilfachrome

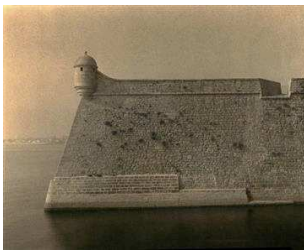


**Anne Noble:** *Securing the shadow #6*, 2013

**Pigment inkjet print** [from Digital image] on Canson paper

**Laurence Aberhart:** *Interior #5, Fort Takapuna, Auckland, 13 April 1994*

**Contact print** **Platinum print**



**Laurence Aberhart:** *Fort wall, Port-Louis, Brittany, France, 14 October 1994/1995*

**Contact print** **Platinum print**

**Janet Bayly:** *Morning Hibiscus, March 1979*

**Polaroid SX-70**

**Postcards** - *Sightseeing* [NZ & German artists]

Mark Adams, Fiona Amundsen, Karin Apollonia Müller, Wayne Barrar, Frank Breuer, John Di Stefano, Jeremy Diggle, Elger Esser, Doris Frohnapfel, Eva Leitolf, Anne Noble, Haruhiko Sameshima, Sarah Schönfeld, Grit Schwedtfeger & Ann Shelton



**Ben Cauchi:** *The moment the photograph was taken*, 2002/2004 [From: *Building the Empire* portfolio]

**Contact print** **Printing-Out Paper**



**Andrew Ross:** *Ronald Hugh Morrison's attic, Hawera 27.4.09/2013*

**Contact print** **Printing-Out Paper** Gold toned



**Wayne Barrar:** *Edge of the Wairau River (south bank), Marlborough 2011*

**Salt print** Gold toned



**Ben Cauchi:** from: *The Doppler Effect* portfolio 2010

**Salt print** Gold & palladium toned



**Aaron Seeto** [Australia] *From the 1000 other things, 2001/2007*

**Silver-Salt photographs** on duck egg shell



**Joyce Campbell:** *San Pedro, 2006*

**Tintype**



Ben Cauchi: *That which came before*, 2008

Tintype



Ben Cauchi: *White Shroud [alternate plate]*, 2006

Tintype

Note: **Provenance** of print – Estate, Posthumous, Auction, Secondary sale via dealer gallery.

**Authentication** certificate

**Vintage**, Modern prints

**Editioning** An introduction to the editioning of photographs <http://www.mcnamara.co.nz/news.html>

**Enlargement** via Enlarger [light projected thru' negative] or via Computer [onto C-type {e.g. Lambda Light Jet} or Inkjet paper]

**Cropping** – e.g. reproduced images in books, book covers

**Dimensions** variable

#### Reference:

